

# ACCESS/ONE™ NETWORK

No Wires

No Waiting

No Worries

*networks  
without:  
wires*



**StrixSYSTEMS**

**NETWORKS WITHOUT WIRES™**

**Sales:**

**Computer Service Corp**

**644 Strander Blvd #11**

**Seattle, Wa 98188**

**(866) 7209-7771 Toll Free**

**[www.csc-service.com](http://www.csc-service.com)**

## The Best Wireless Network has No Wires - Anywhere

Workers are clamoring for wireless access, and executives and administrators have recognized the bottom line advantages of implementing wireless networks.

### **It's up to you to recommend a wireless LAN solution. But which product offers the best overall solution?**

Consider the cost of implementation. Not just the cost of the access points, but the entire cost of deployment. How long will it take and how much will it cost to architect the network, and then roll out the deployment?

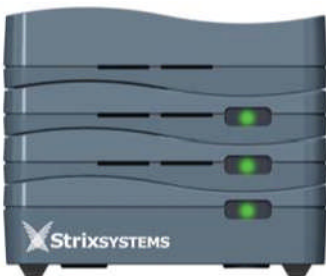
Once the wireless LAN is installed, how easy will it be for you to configure and manage your network? When you need to expand the network or make changes, will it be a simple, seamless transition or a costly, complicated redeployment? Should a connection go down, will your network heal itself, or will entire groups of users lose access? When new technologies become available, will you be able to easily upgrade your network or will you be faced with time consuming and costly headaches?

### **The Access/One Network**

Strix Systems introduces the Access/One Network – the future of wireless networking. Access/One Network Nodes combine sophisticated functionality within a small, light-weight design that is remarkably easy to deploy. The Network Nodes connect wirelessly – out of the box – to form a mesh topology creating a truly wireless networking system.

The Access/One Network offers the highest levels of wireless performance, scalability, and redundancy while removing hard wired uplinks and eliminating single points of failure found in other wireless networks. Access/One Network complements your existing LAN installation, saving you time and money.

No wires means faster and less costly deployments. There's no waiting for engineers to do extensive site surveys. The time, trouble, and expense of running wire to each access point have been completely removed. The modular nature of the Access/One Network product makes configuration of existing technologies or adding future technologies a snap. Access/One Network's distributed intelligence gives IT managers the control and management functionality essential to a smooth running, secure, worry-free network.



**No Wires. No Waiting. No Worries.  
The Access/One Network.**

## The Access/One Network Advantage

The Strix Systems Access/One Network is the most advanced wireless LAN product available today. Access/One Network utilizes compact modules that stack on top of each other with an interlocking mechanism that holds them securely together. Integrated connectors provide power and signal transfer

between modules. The stacked modules form Network Nodes that can be configured to accommodate multiple RF technologies.

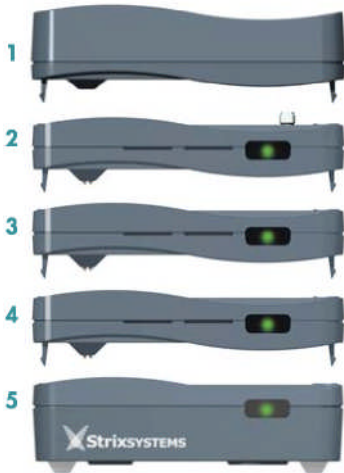
Nodes can be easily mounted on ceilings, walls, cubicles, desktops, or even above ceiling tiles.

One of Access/One Network's most powerful features is the built-in distributed intelligence. The Access/One Network is self configuring, auto-discovering, self tuning, and self healing. When you power on the Access/One Network, the modules immediately go to work.

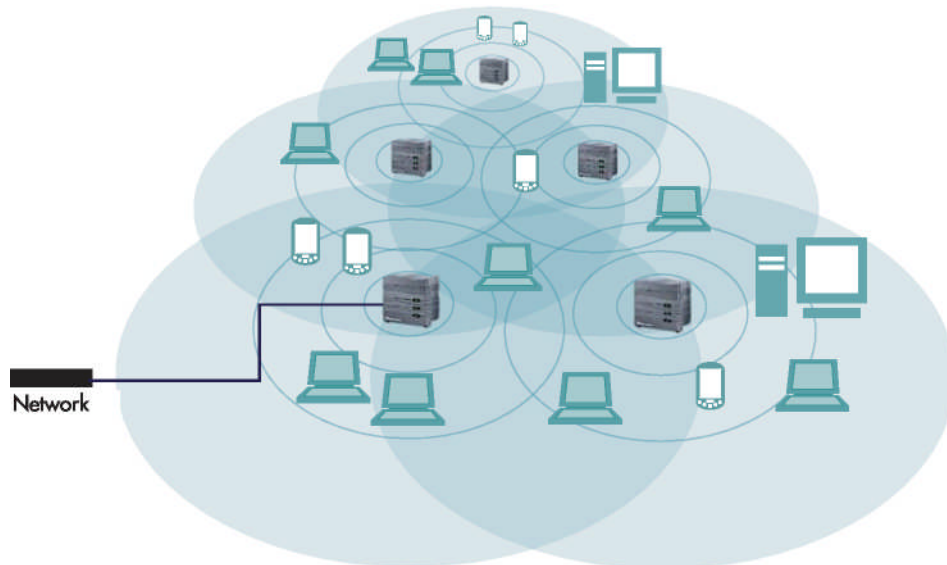
First, the modules configure their role within the node. Then the nodes configure themselves to form the entire network. Once the network is formed, the nodes continuously tune the network to optimize performance based on path availability and traffic flow.

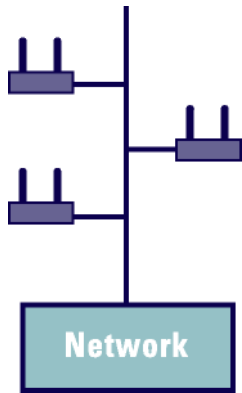
### Mesh Topology

The deployed Access/One Network forms a mesh network. No wires makes the Access/One Network easy to deploy. Access/One Network scales proportionally with user growth – up to thousands of connected devices.

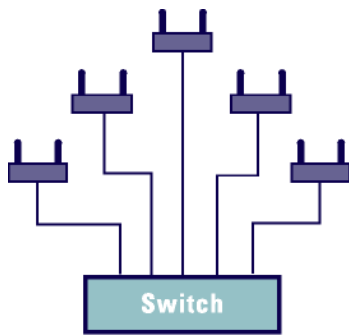


- 1 Antenna Module
- 2 Client Connect Wireless Module
- 3 Network Connect Wireless Module
- 4 Network Server Module
- 5 Base Module

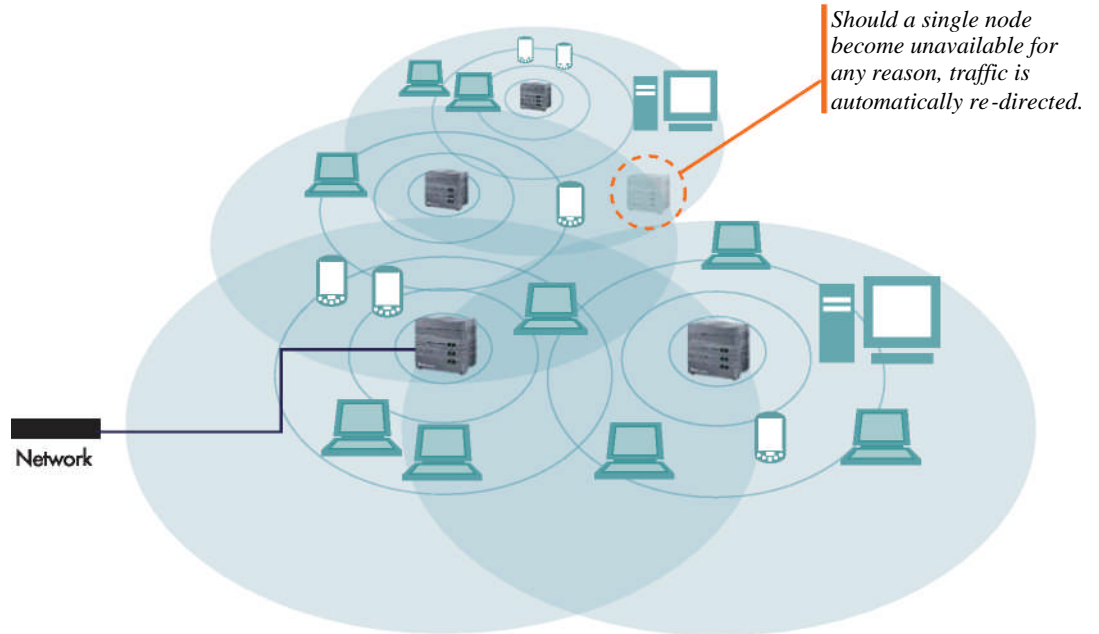




**Point products:** *Access point products must be carefully placed and manually configured, don't offer wireless intelligence and are isolated islands within the network.*



**WLAN (switches):** *Centralized WLAN's require stepwise growth, can't tune for performance, and if the switch fails, all coverage is lost.*



*Should a single node become unavailable for any reason, traffic is automatically re-directed.*

There is no reliance on any single node to handle traffic. Multiple nodes cooperate to relay information across the network, enhancing reliability. Should a single node become unavailable for any reason, traffic is automatically re-directed.

These features reduce the costs of deploying and maintaining the network, and simplify the network operation, thereby reducing IT management hassles.

**Compare the Strix Systems' solution to available products:**

Wireless point product solutions fall well short of the Access/One Network product in a number of areas. First, these products lack centralized management. Point products also have limited scalability and redundancy capabilities. Access points cannot be further than 100 meters from the core network without requiring repeaters, which limits coverage or drives up costs.

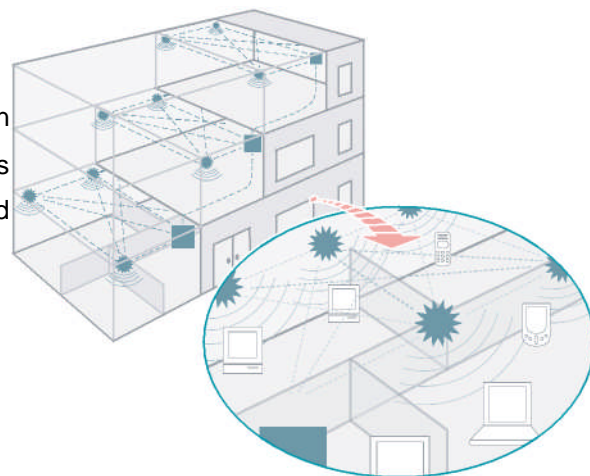
So-called wireless LAN switches still require hard-wired uplinks with all the attendant costs associated with detailed planning and wiring. Should you want to add additional access points, but find the ports on the switch are full, you'll need to buy a new switch, forcing you into massive stepwise growth. And those switches are bottlenecks that may slow network speed and will bring your entire network down if they fail.



### Easy to Deploy

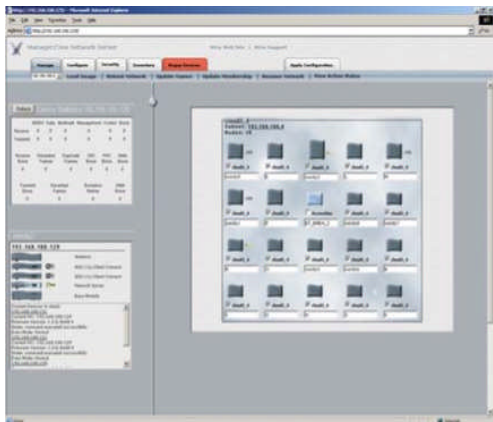
Because you don't have to run wires to the individual nodes, deployments are completed in hours, not days, or weeks. The Access/One Network doesn't require elaborate planning and site mapping to achieve reliable communications. Adding or moving nodes can be done in a fraction of the time it takes with existing wireless LAN products. Access/One Network deployments are particularly advantageous in Ethernet-unfriendly environments such as old buildings, new buildings with no installed wire, and situations where network cabling is not an option. The savings over a traditional wired set up and installation are tremendous.

Access/One Network can be deployed as an overlay to your existing network or installed as your primary network. If you have an installed wired network, we're completely compatible with your existing network. You won't have to drop additional Ethernet cable, or add new switches or routers when deploying the Access/One Network.



### Easy to Manage

With our built-in network management software, Manager/One™, IT managers can monitor, configure and diagnose all aspects of the system from anywhere in the network, either via Web server interface or enterprise manager. This gives added, manual control to Access/One Network's otherwise automated self-managing system.



The intuitive Manager/One™ user interface gives you a window into the entire Access/One Network. You can view and manage at the network level or drill down to the node or even module level.

Manager/One™ scans for rogue devices on the network at pre-set intervals determined by you. This powerful tool alerts you whenever a rogue device has been installed on your network, and, through triangulation, helps you locate the device.

Manager/One™ provides you with complete inventory control, allowing you to list module serial numbers, module types, current status, IP addresses, and software version per module. With Manager/One, you can easily configure the entire system, a single node, or an individual module.



**Flexible**

Thanks to the modular nature of the Access/One Network, you have the option of choosing the right wireless technology for your users, including use of multiple RF technologies in the same network. Modifying RF technologies within the system is as easy as popping off one module and snapping on a new one.

Access/One Network future-proofs your investment by giving you an architecture that is ready to accept future RF technologies.

**Secure**

Access/One Network provides easily configured, standards-based security options that allow you to customize node by node or system-wide. Access/One Network offers all of the latest security features including 802.1x authentication and encryption schemes up to and including AES. Each radio module includes a RADIUS client and sufficient hardware-based processing power for AES encryption.

	Minimum	Better	Best
<b>Authentication</b>	MAC address control list	802.1 x EAP	802.1 x EAP (TLS or TTLS)
<b>Encryption</b>	Static WEP	Dynamic WEP or 1 28-bit WEP with TKIP	Dynamic AES
<b>Requirements</b>		RADIUS Server	RADIUS Server, AES hardware support and AES NICs

Access/One Network improves upon the wired network’s security by offering closet to client encryption, eliminating eavesdropping that can occur between those two points in a traditional wired LAN.



## It's Everything You Thought a Wireless LAN Couldn't Be

The Strix Systems' Access/One Network has broken the barriers of wire and revolutionized the way that wireless works.

Access/One Network removes the need to run wire that hampers traditional wireless access point deployments, driving down costs in the process. Access/One Network's wireless, modular design simplifies network changes and moves, saving you time and money on redeployments and future-proofing your investment. Access/One Network's distributed intelligence reduces the amount of work required to maintain the network. Access/One Network's management functionality is second to none – giving you complete control of the network, all at your fingertips.

Access/One Network is the superior wireless solution that enables worker productivity through access and mobility. Access/One delivers rapid ROI – that will make your executives happy and make you look great. Best of all, Access/One Network is a smart, simple to use and maintain wireless technology – and that makes your life easier.

- No Wires** – A truly wireless networking solution
- No Waiting** – Fast, easy deployments
- No Worries** – A wireless networking system that is secure, easy to manage, and built to grow with you.

To learn more about us, or to purchase the Access/One Network, contact your Strix Systems' reseller.



**Computer Service Corp**  
644 Strander Blvd #11  
Seattle, WA 98188  
(866) 729-7771 Toll Free  
(253) 841-7654 Fax  
[www.csc-service.com](http://www.csc-service.com)



**Computer Service Corp**

644 Strander Blvd #11  
Seattle, WA 98188

(866) 729-7771 Toll Free  
(253) 841-7654 Fax

[www.csc-service.com](http://www.csc-service.com)